

Artecy

CROSS STITCH

Kirkjufellsfoss Iceland



* Original image© Roma Ryabchenko - Unsplash
Cross Stitch Design by Tereena Clarke.

Completed Size = 300w x 217h Stitches

14 Count, 21.5w x 15.5h inches (55cm x 39cm)

16 Count, 19w x 14h inches (48cm x 36cm)

18 Count, 17w x 12.5h inches (43cm x 32cm)

Uses 84 DMC cotton colours. Only full cross stitches are used in this pattern.

Pattern Instructions

* This pattern can be worked on any fabric type, colour or count you prefer. To work out the size of the finished article, take the number of stitches wide and high and divide it by the count of your fabric (e.g. 14,16,18 count aida etc) to get the size in inches. Times it by 2.54 to get centimetres. We have the sizes in inches shown on the previous page. Also leave at least a few inches of fabric around each side of the design to assist in framing. The higher the fabric count the smaller the completed project will be.

* To put the pattern together look in the top and bottom corners. The page numbers in brackets show which page number it joins up to. Page 1 always starts at the top left hand side of the pattern. Our pages also have a shaded grey section. This indicates a 3 row overlap from adjoining pages to assist with reading the pattern. PLEASE DO NOT RESTITCH THIS AREA.

* You should begin at the centre of the pattern. To find the centre of the pattern it is just a matter of laying the pattern out and locating the arrows at the top and left hand side of the patterns, they are determined by dividing the stitch numbers wide and high in half. Where the two points meet in the middle, that is the centre.

* If you need more assistance to find the middle of your pattern or the page layout, please see the notes section on the colour symbol chart. The easiest way to stitch this pattern, as it has multiple pages, is to stitch one page at a time.

* We suggest using two strands of floss for each stitch and one strand for backstitching if the pattern calls for it.

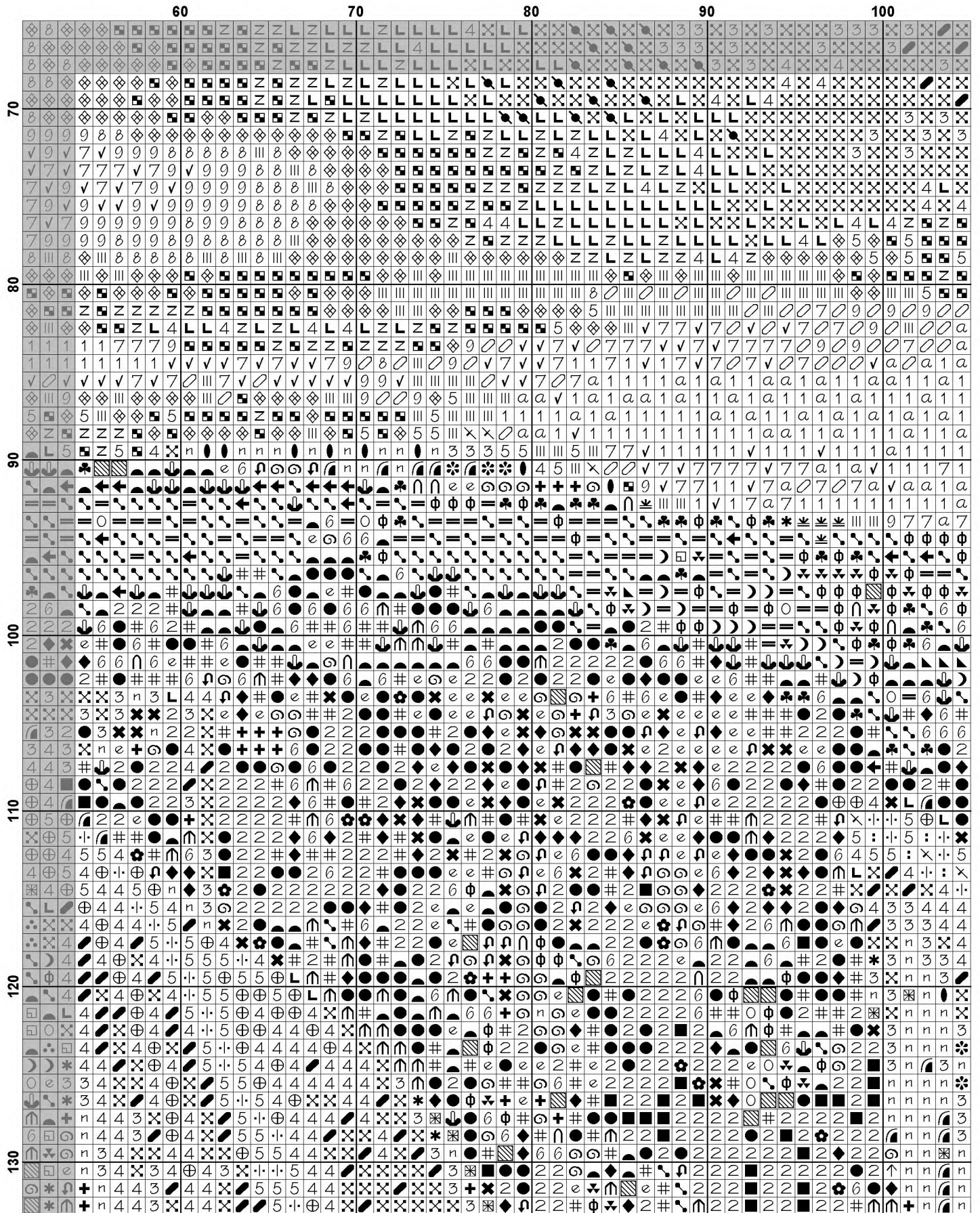
We hope you enjoy stitching our pattern.

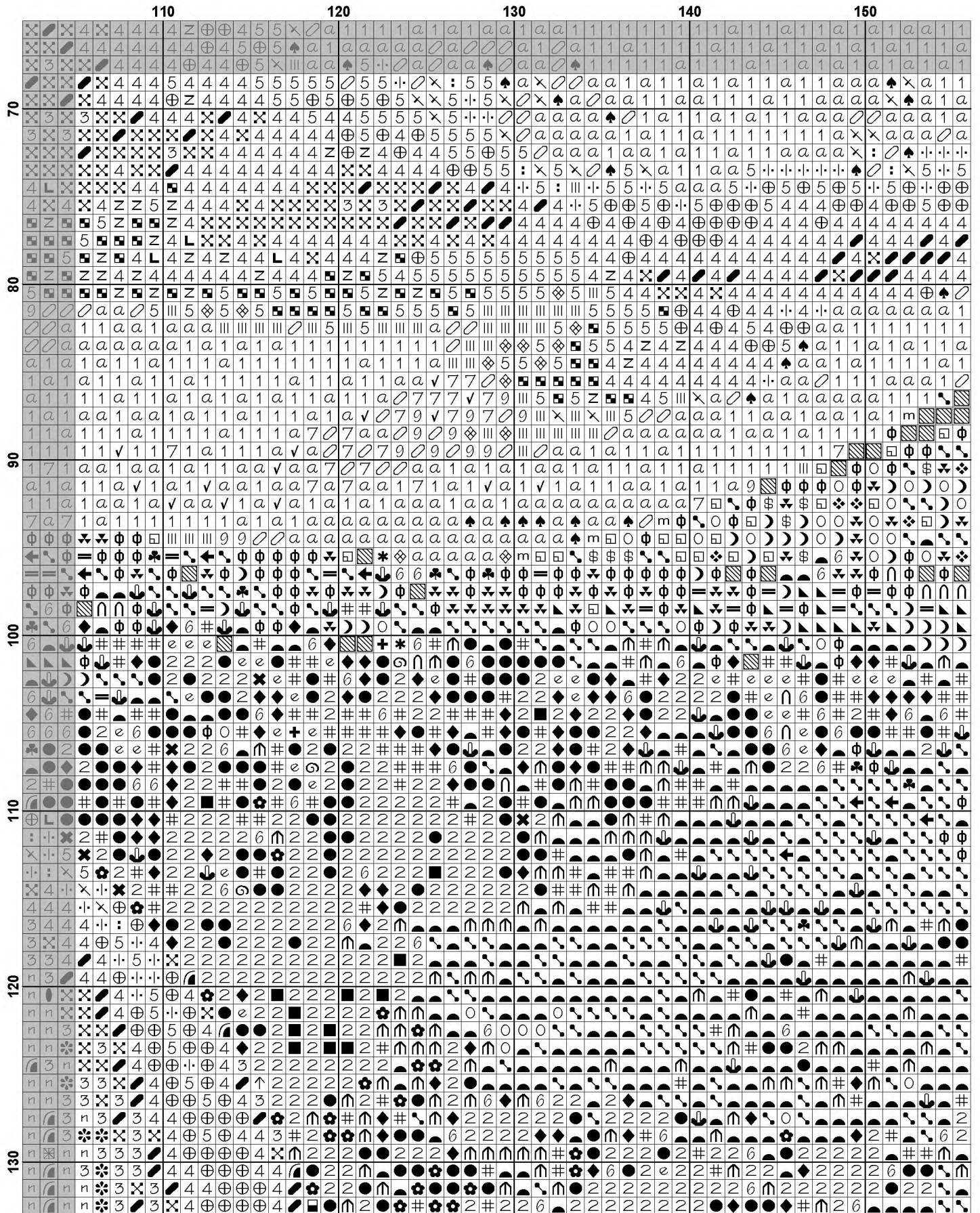
Thanks and Best Wishes
Tereena Clarke

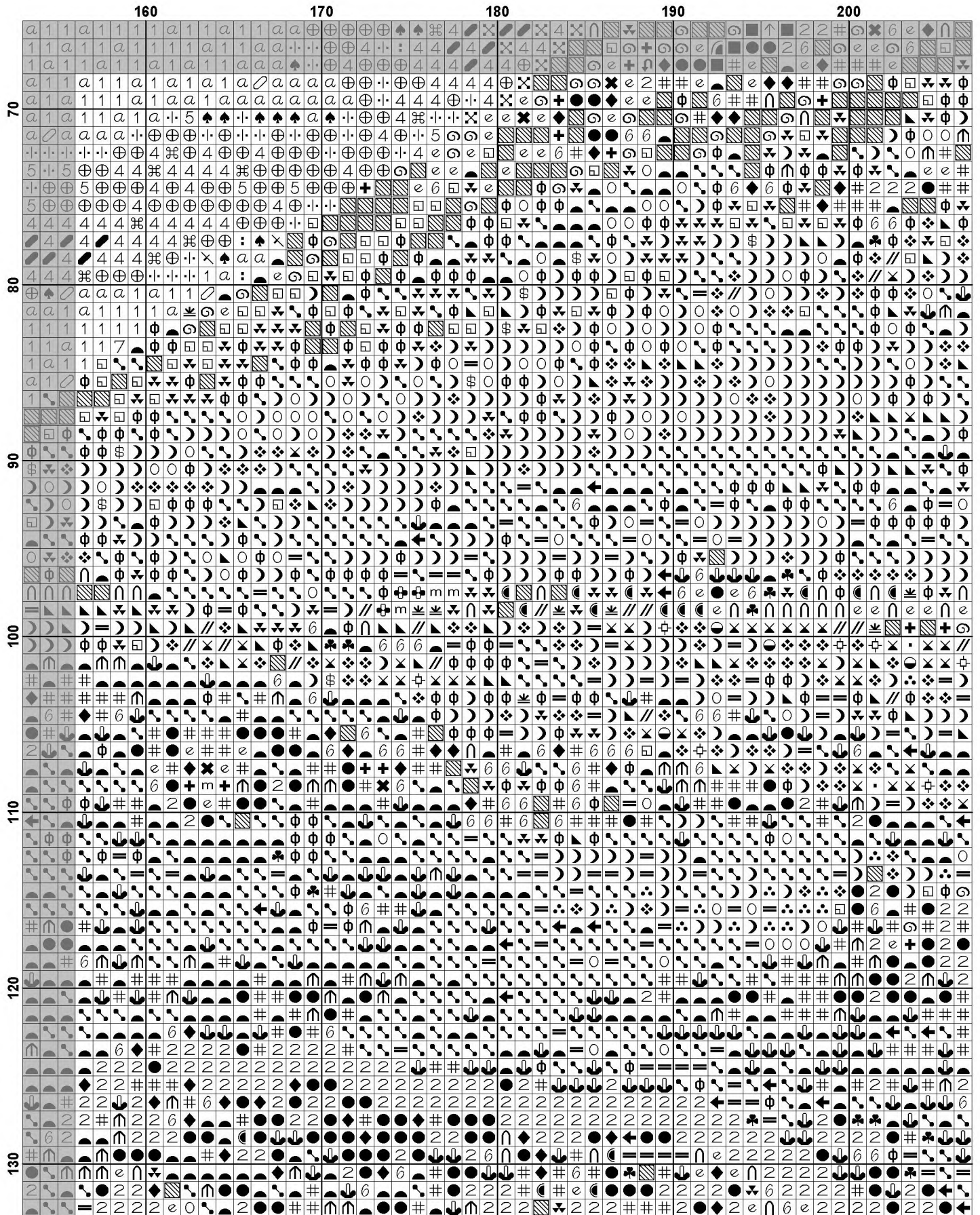
Artecy Cross Stitch
Po Box 3474
Tuggerah, NSW 2259
Australia

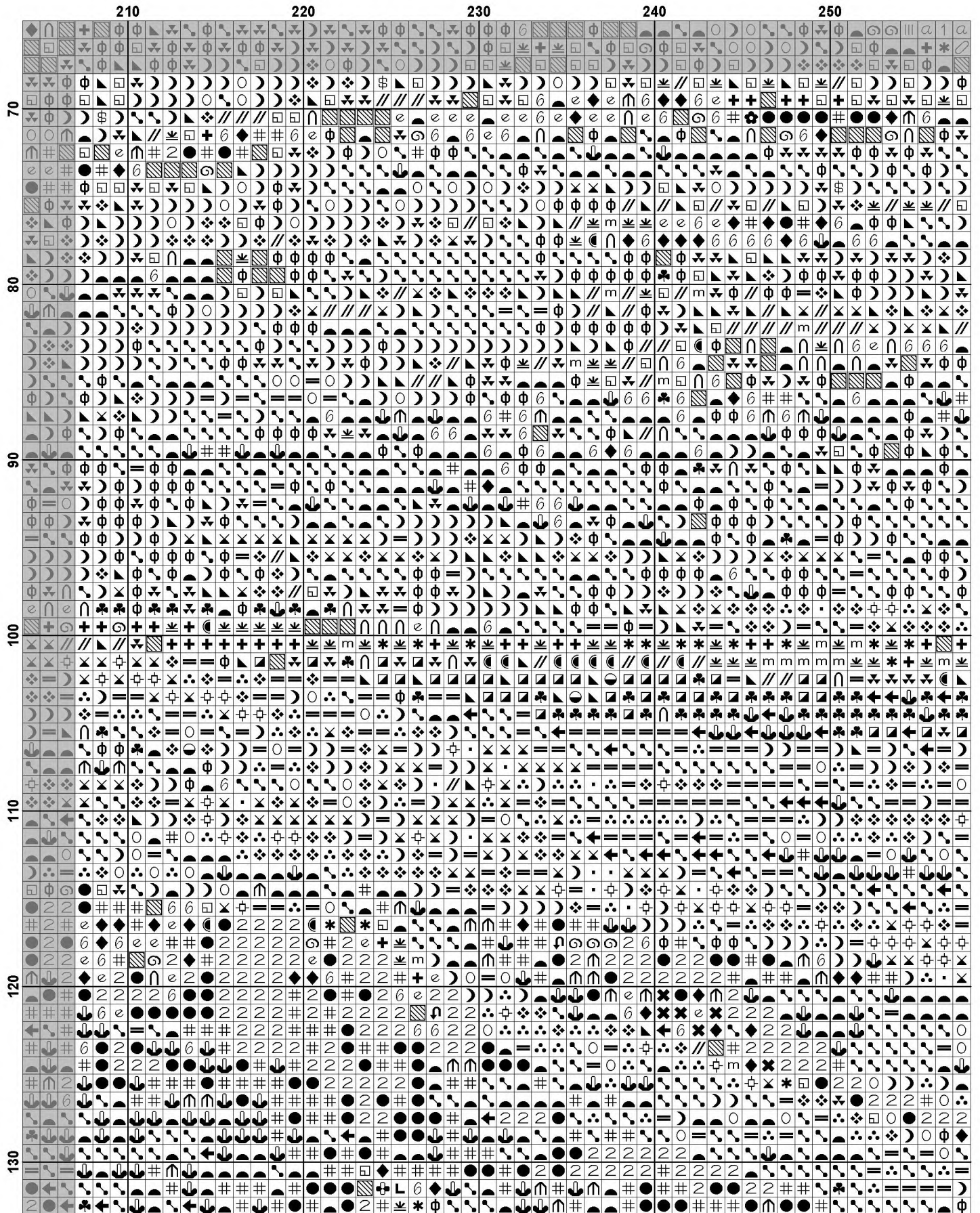
Websites: www.artecy.com and www.artecyshop.com
Email: artecy@artecy.com or stitch@artecyshop.com

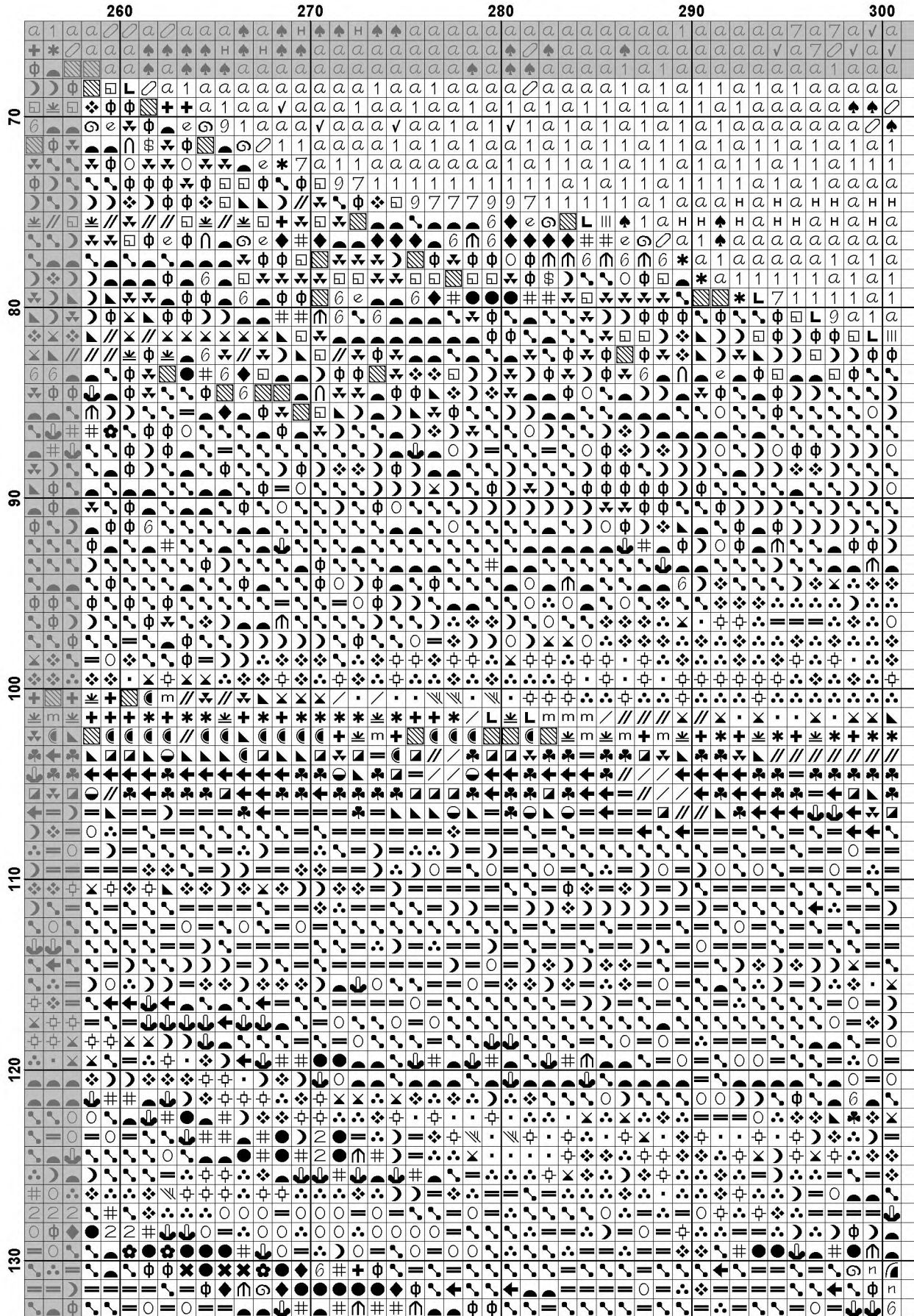
*Patterns are strictly for personal use only. It is against our copyright to make kits for sale from our designs or to sell, copy or redistribute this pattern in any form. You may not upload our patterns to any internet forums or groups or any other website. You may make 1 copy of this pattern for a working copy for your own personal use if needed.

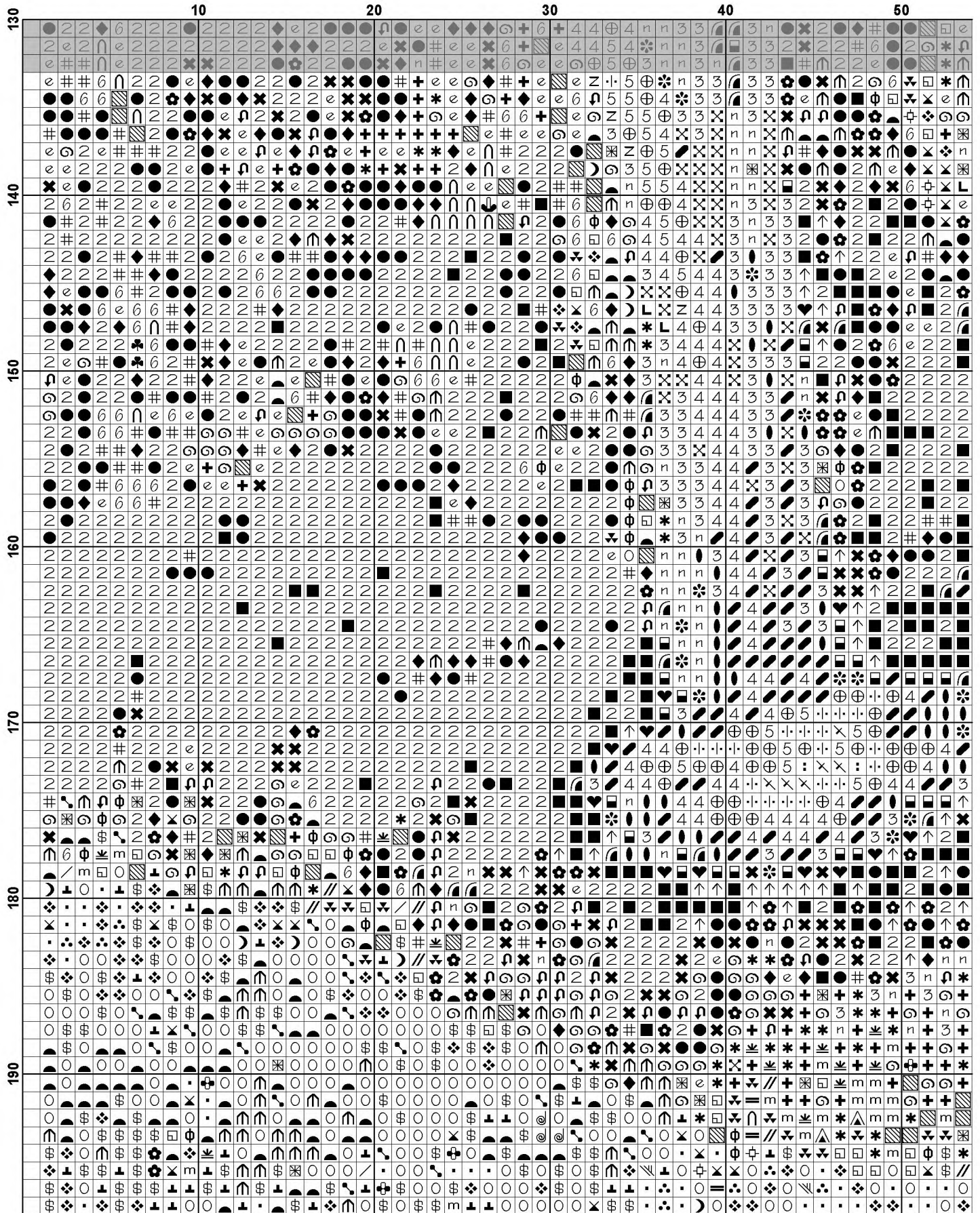


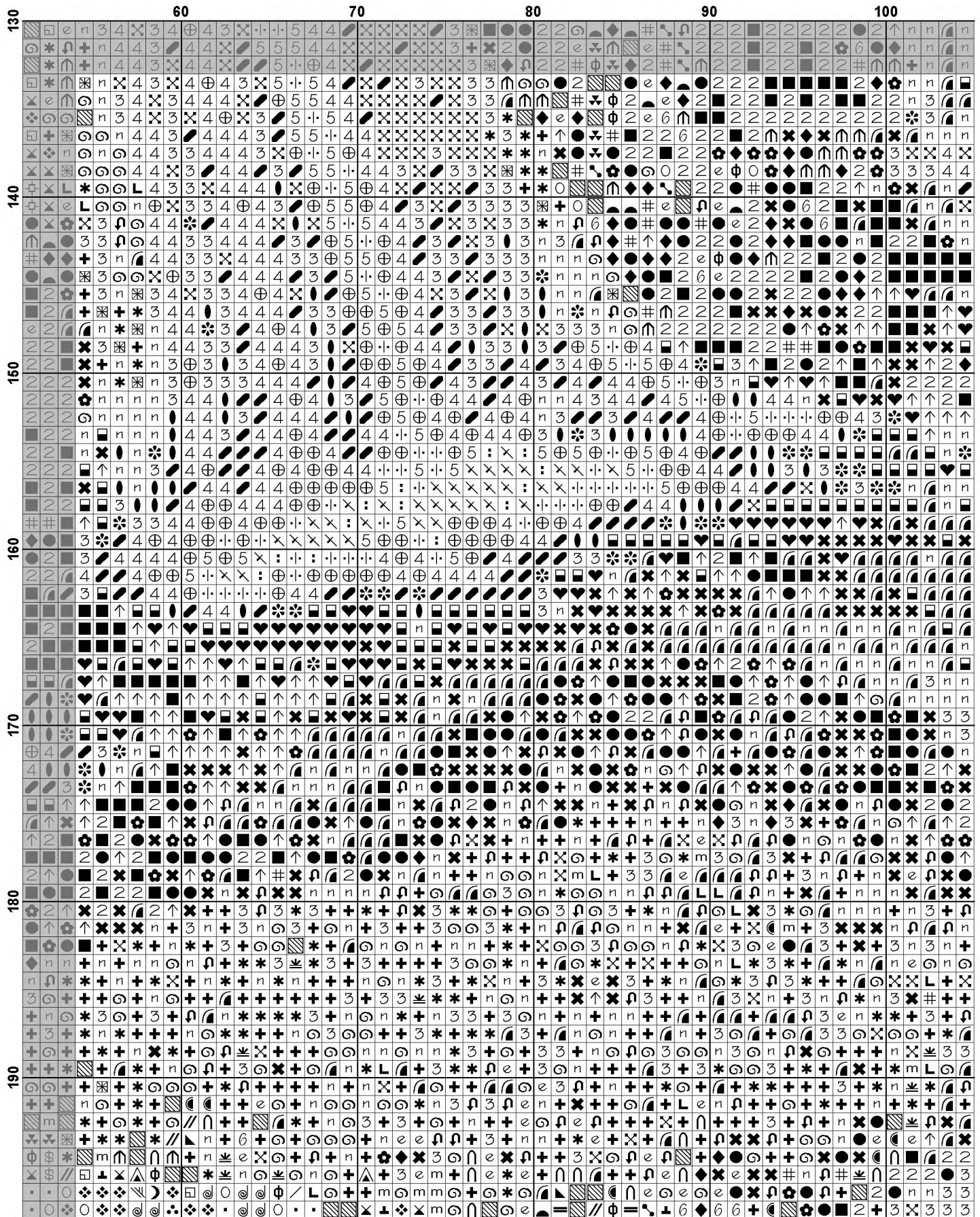


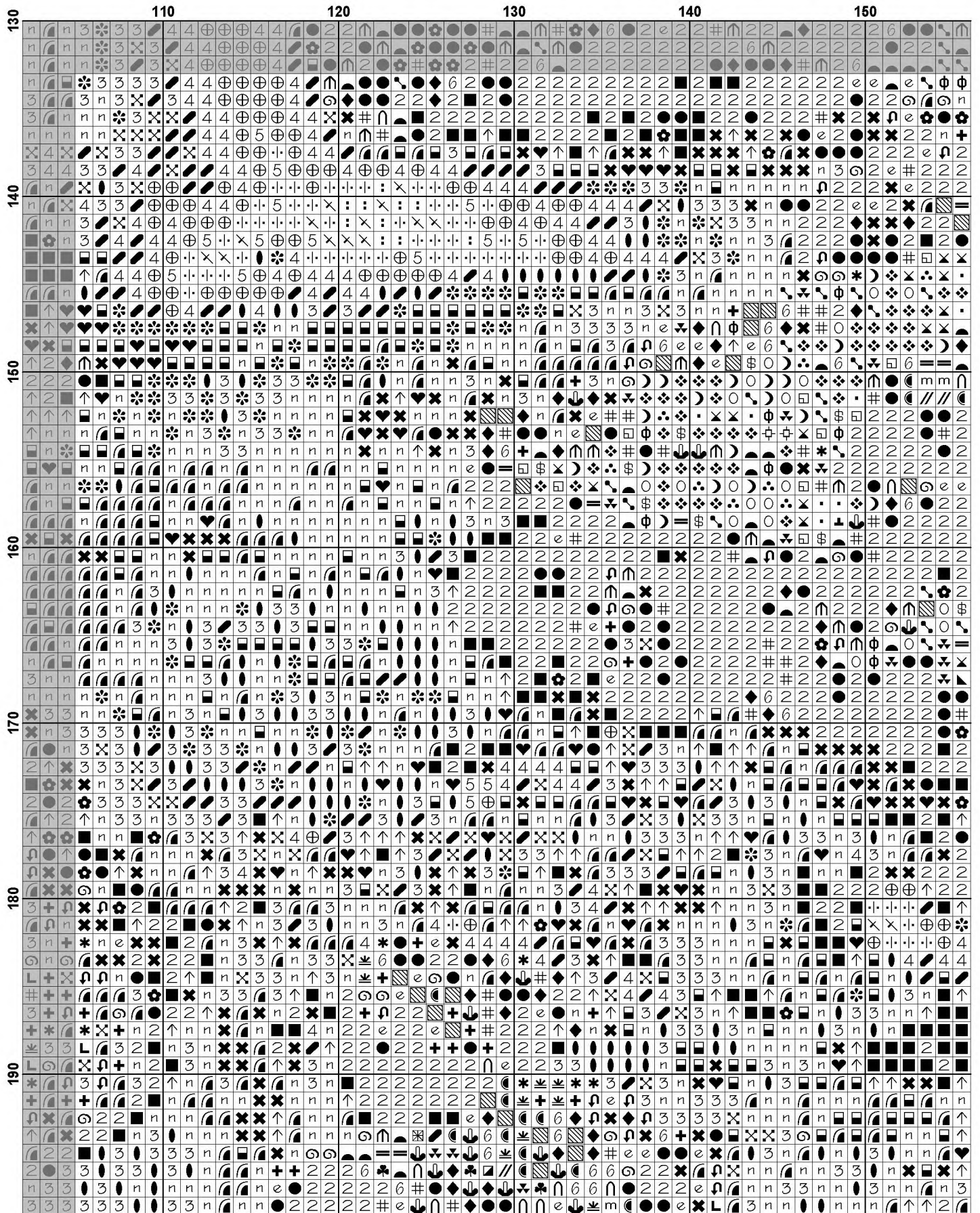


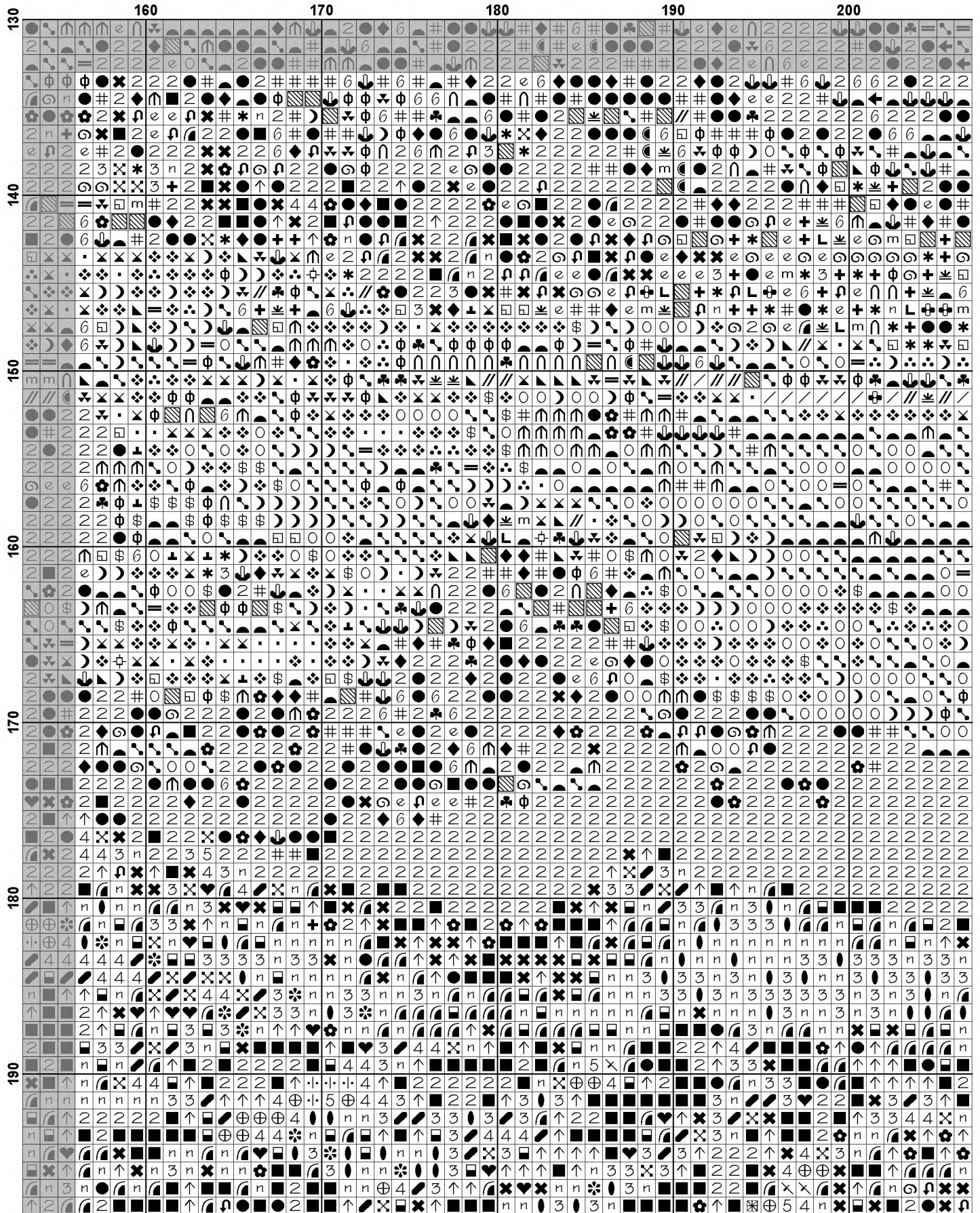


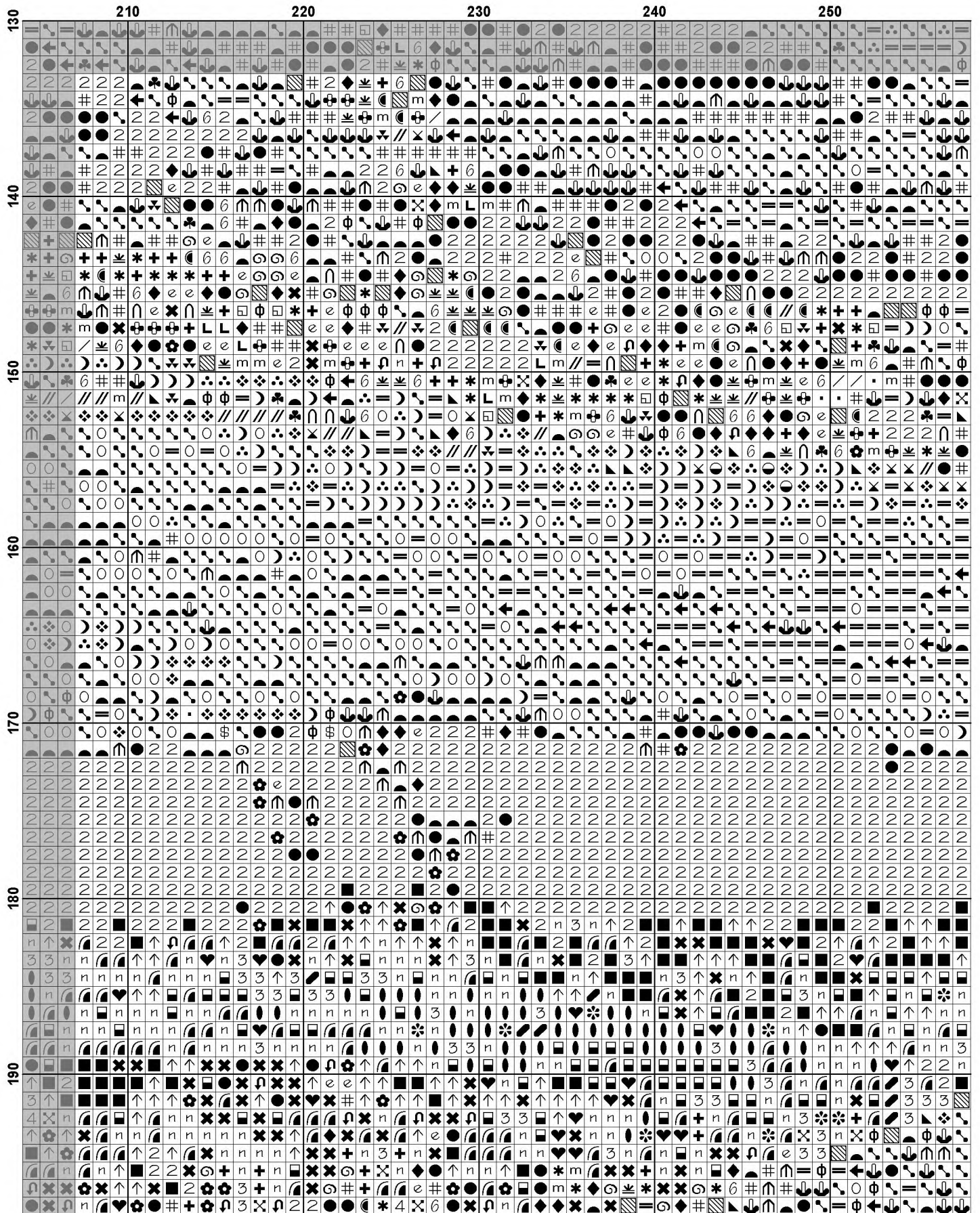


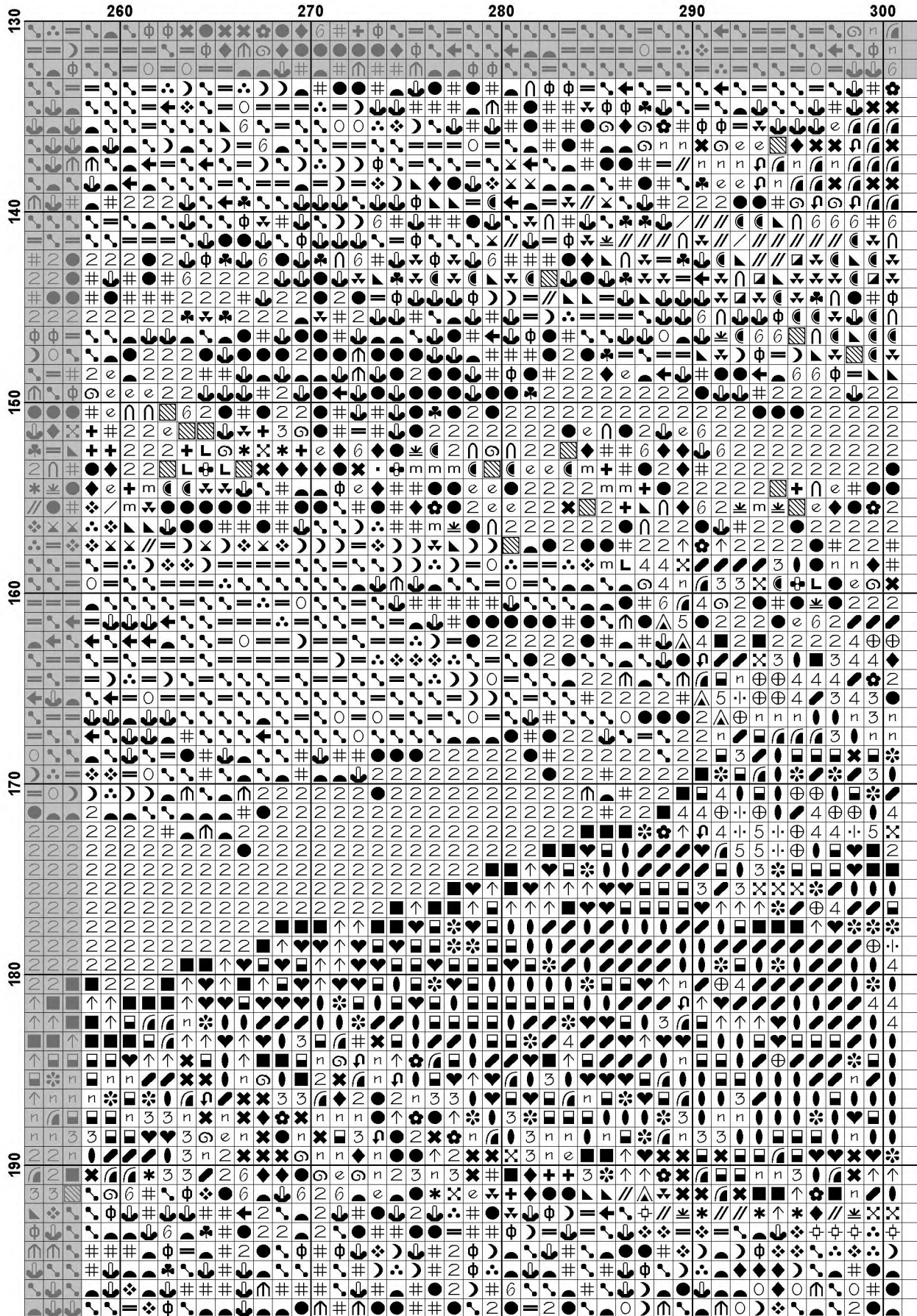


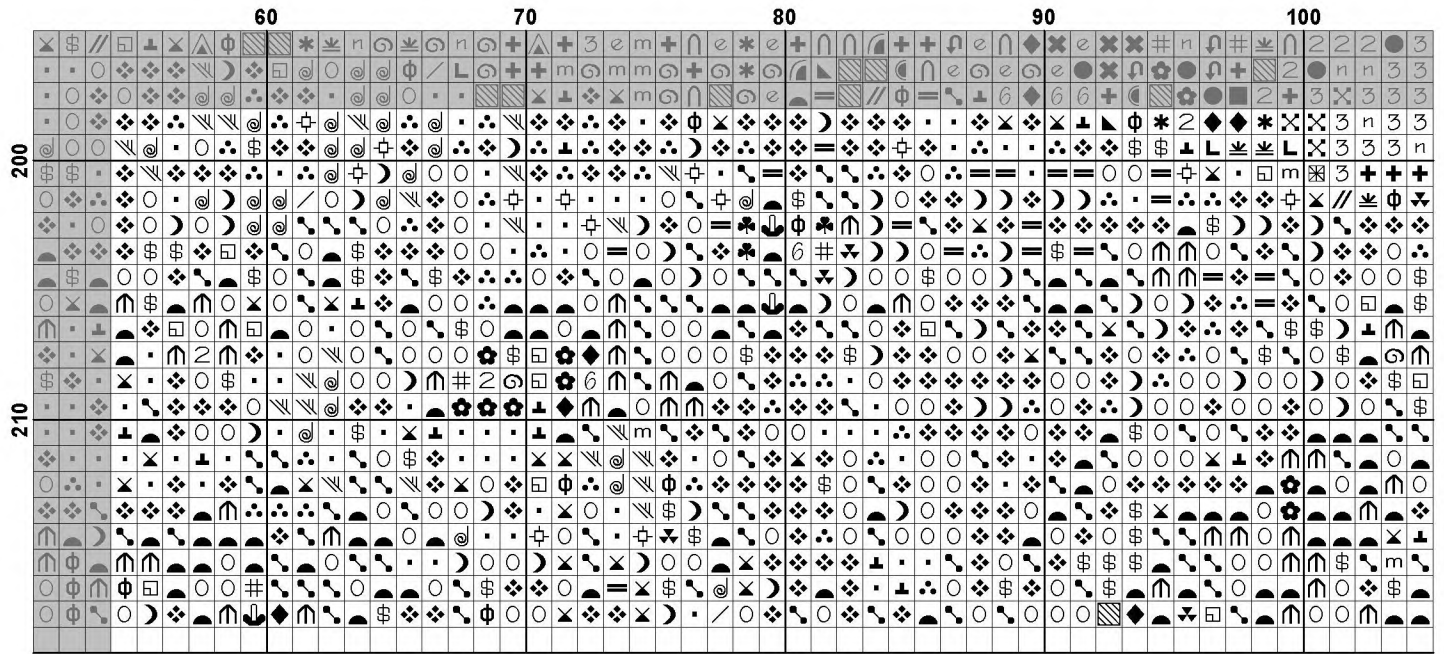


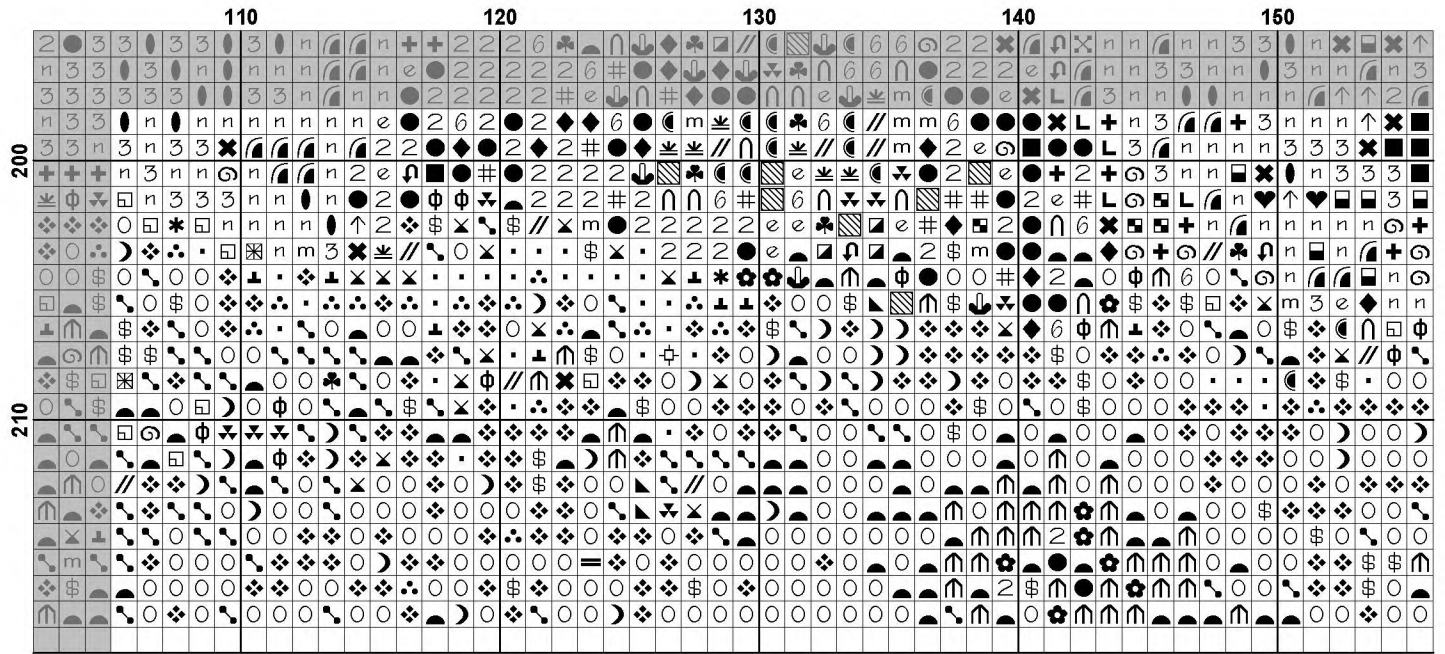


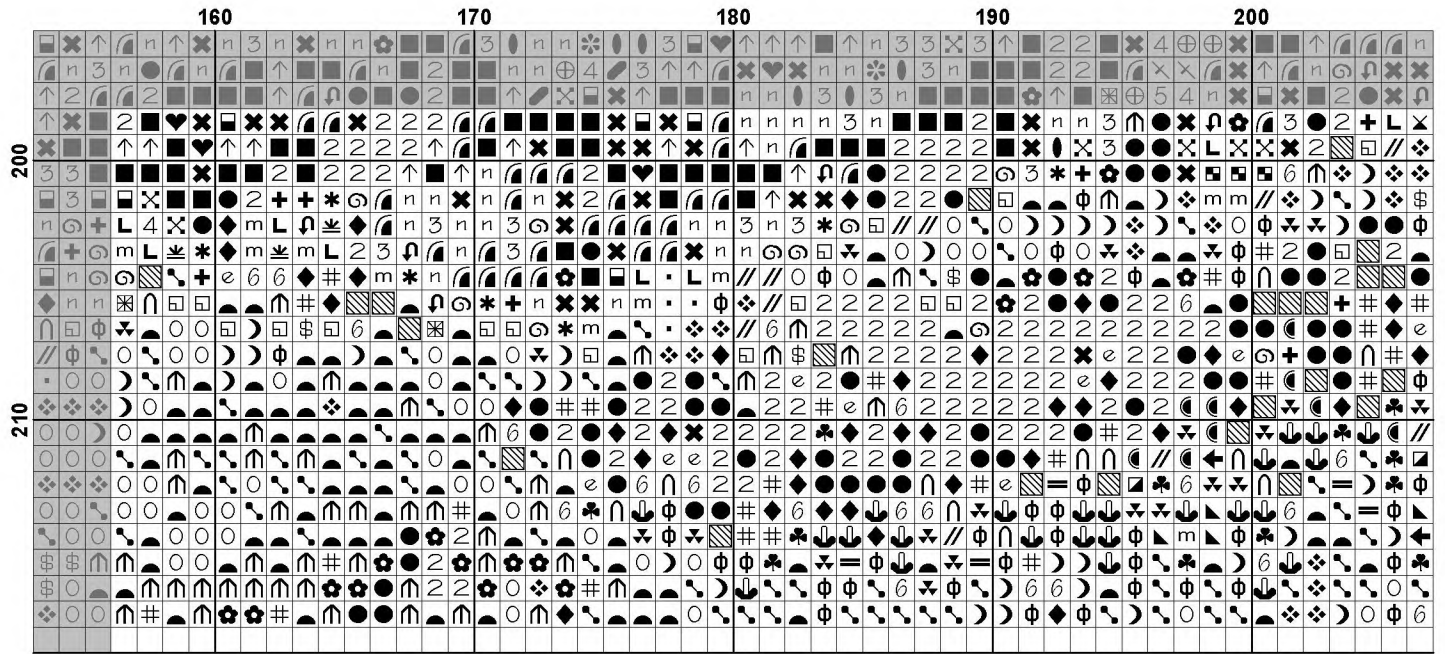


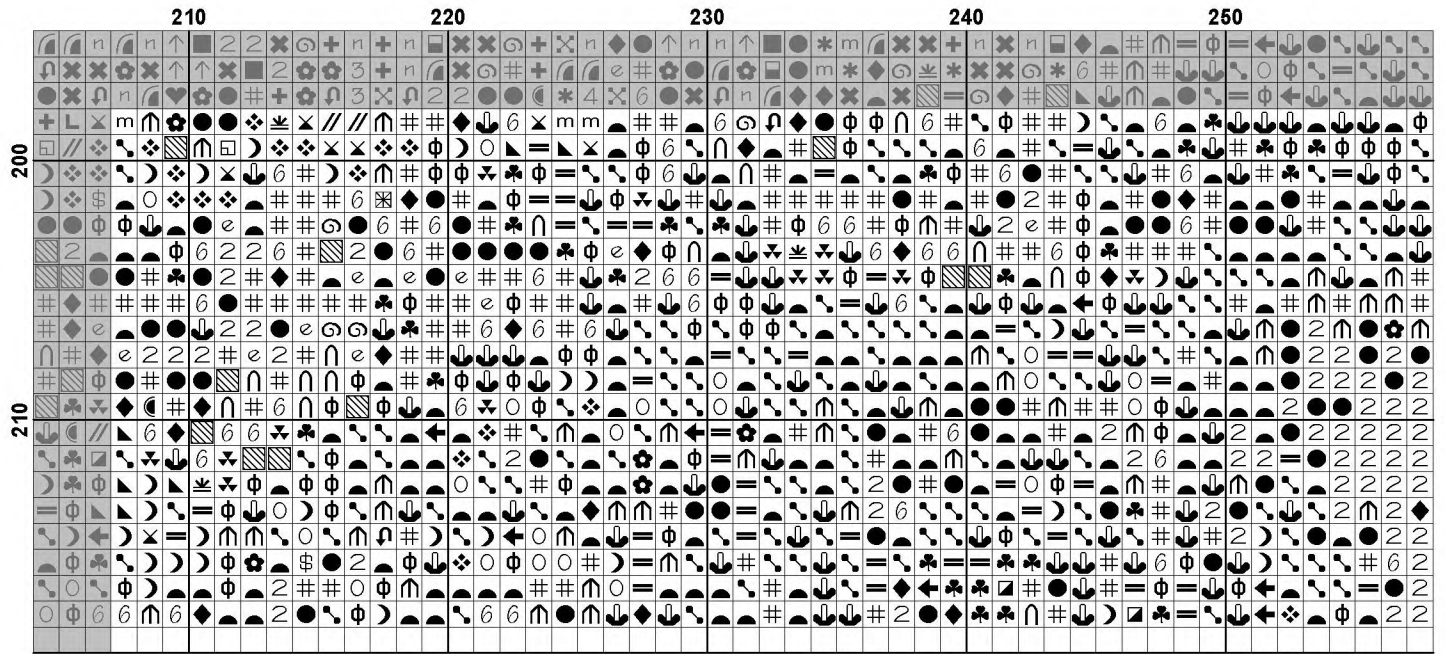


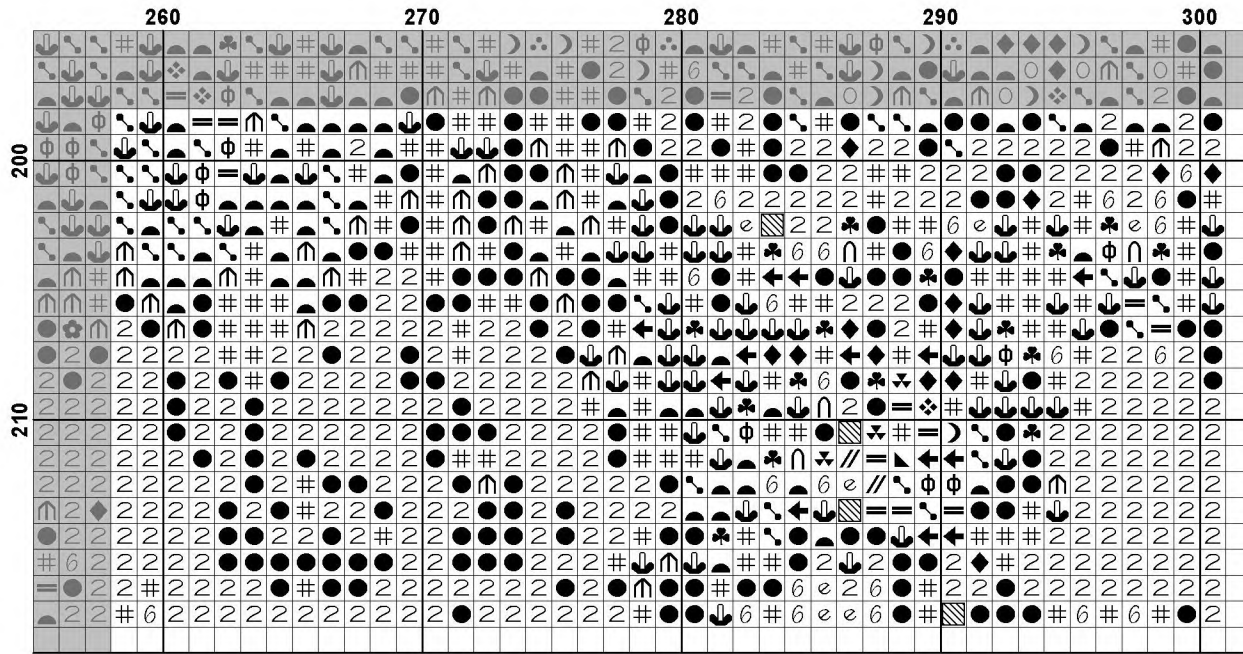












Pattern Name: Kirkjufellsfoss Iceland
Designed By: Photo by Roma Ryabchenko - Unsplash
Company: Artecy Cross Stitch
Copyright: Copyright Artecy Cross Stitch. All rights Reserved.
Fabric: Aida 14, White
 300w X 217h Stitches
Size(s): 14 Count, 21-3/8w X 15-1/2h in
 16 Count, 18-3/4w X 13-1/2h in
 18 Count, 16-5/8w X 12h in

Floss Used for Full Stitches:

Symbol	Strands	Type	Number	Color
	2	DMC	159	Gray Blue-LT
	2	DMC	160	Gray Blue-MD
	2	DMC	161	Gray Blue
	2	DMC	162	Blue-UL VY LT
	2	DMC	166	Moss Green-MD LT
	2	DMC	167	Yellow Beige-VY DK
	2	DMC	169	Pewter-LT
	2	DMC	300	Mahogany-VY DK
	2	DMC	310	Black
	2	DMC	317	Pewter Gray
	2	DMC	318	Steel Gray-LT
	2	DMC	400	Mahogany-DK
	2	DMC	413	Pewter Gray-DK
	2	DMC	414	Steel Gray-DK
	2	DMC	415	Pearl Gray
	2	DMC	436	Tan
	2	DMC	451	Shell Gray-DK
	2	DMC	453	Shell Gray-LT
	2	DMC	470	Avocado Green-LT
	2	DMC	471	Avocado Green-VY LT
	2	DMC	543	Beige Brown-UL VY LT
	2	DMC	581	Moss Green
	2	DMC	612	Drab Brown-LT
	2	DMC	632	Desert Sand-UL VY DK
	2	DMC	640	Beige Gray-VY DK
	2	DMC	645	Beaver Gray-VY DK
	2	DMC	646	Beaver Gray-DK
	2	DMC	647	Beaver Gray-MD
	2	DMC	648	Beaver Gray-LT
	2	DMC	680	Old Gold-DK
	2	DMC	712	Cream
	2	DMC	730	Olive Green-VY DK
	2	DMC	732	Olive Green
	2	DMC	733	Olive Green-MD
	2	DMC	743	Yellow-MD
	2	DMC	747	Sky Blue-VY LT
	2	DMC	762	Pearl Gray-VY LT
	2	DMC	775	Baby Blue-VY LT
	2	DMC	779	Cocoa-DK
	2	DMC	782	Topaz-DK
	2	DMC	794	Cornflower Blue-LT
	2	DMC	801	Coffee Brown-DK
	2	DMC	809	Delft Blue
	2	DMC	822	Beige Gray-LT
	2	DMC	823	Navy Blue-DK

Symbol	Strands	Type	Number	Color
	v	2	DMC 827	Blue-VY LT
	φ	2	DMC 831	Golden Olive-MD
	⌣	2	DMC 832	Golden Olive
	×	2	DMC 833	Golden Olive-LT
	⤵	2	DMC 844	Beaver Brown-UL DK
	■	2	DMC 930	Antique Blue-DK
	⊗	2	DMC 934	Black Avocado Green
	⤵	2	DMC 936	Avocado Green-VY DK
	#	2	DMC 938	Coffee Brown-UL DK
	■	2	DMC 939	Navy Blue-VY DK
	♣	2	DMC 975	Golden Brown-DK
	○	2	DMC 976	Golden Brown-MD
	□	2	DMC 3012	Khaki Green-MD
	≡	2	DMC 3024	Brown Gray-VY LT
	◆	2	DMC 3031	Mocha Brown-VY DK
	Z	2	DMC 3042	Antique Violet-LT
	♡	2	DMC 3325	Baby Blue-LT
	⊗	2	DMC 3363	Pine Green-MD
	▲	2	DMC 3364	Pine Green
	●	2	DMC 3371	Black Brown
	×	2	DMC 3747	Blue Violet-VY LT
	♥	2	DMC 3750	Antique Blue-VY DK
	⋈	2	DMC 3752	Antique Blue-VY LT
	a	2	DMC 3756	Baby Blue-UL VY LT
	✻	2	DMC 3768	Gray Green-DK
	√	2	DMC 3770	Tawny-VY LT
	☾	2	DMC 3772	Desert Sand-VY DK
	⊗	2	DMC 3787	Brown Gray-DK
	✘	2	DMC 3799	Pewter Gray-VY DK
	·	2	DMC 3819	Moss Green-LT
	⊕	2	DMC 3820	Straw-DK
	≡	2	DMC 3821	Straw
	▣	2	DMC 3826	Golden Brown
	//	2	DMC 3828	Hazelnut Brown
	+	2	DMC 3860	Cocoa
	▨	2	DMC 3862	Mocha Beige-DK
	⊕	2	DMC 3863	Mocha Beige-MD
	⊕	2	DMC 3864	Mocha Beige-LT
	1	2	DMC 3865	Winter White

Notes:

The middle of this pattern can be found on page 9 and is 151 stitches across and 110 stitches down.

Pattern layout using page numbers in top left.

```

1  2  3  4  5  6
7  8  9 10 11 12
13 14 15 16 17 18
19 20 21 22 23 24

```

Usage Summary

Strands Per Skein: 6

Skein Length: 313.0 in

Type	Number	Full	Half	Quarter	Petite	Back(in)	Str(in)	Spec(in)	French	Bead	Skein Est.
DMC 159	159	783	0	0	0	0.0	0.0	0.0	0	0	1.000
DMC 160	160	673	0	0	0	0.0	0.0	0.0	0	0	1.000
DMC 161	161	467	0	0	0	0.0	0.0	0.0	0	0	1.000
DMC 162	162	821	0	0	0	0.0	0.0	0.0	0	0	1.000
DMC 166	166	456	0	0	0	0.0	0.0	0.0	0	0	1.000
DMC 167	167	615	0	0	0	0.0	0.0	0.0	0	0	1.000
DMC 169	169	1640	0	0	0	0.0	0.0	0.0	0	0	1.000
DMC 300	300	965	0	0	0	0.0	0.0	0.0	0	0	1.000
DMC 310	310	4999	0	0	0	0.0	0.0	0.0	0	0	3.000
DMC 317	317	1409	0	0	0	0.0	0.0	0.0	0	0	1.000
DMC 318	318	1631	0	0	0	0.0	0.0	0.0	0	0	1.000
DMC 400	400	205	0	0	0	0.0	0.0	0.0	0	0	1.000
DMC 413	413	915	0	0	0	0.0	0.0	0.0	0	0	1.000
DMC 414	414	2524	0	0	0	0.0	0.0	0.0	0	0	2.000
DMC 415	415	535	0	0	0	0.0	0.0	0.0	0	0	1.000
DMC 436	436	33	0	0	0	0.0	0.0	0.0	0	0	1.000
DMC 451	451	581	0	0	0	0.0	0.0	0.0	0	0	1.000
DMC 453	453	443	0	0	0	0.0	0.0	0.0	0	0	1.000
DMC 470	470	379	0	0	0	0.0	0.0	0.0	0	0	1.000
DMC 471	471	157	0	0	0	0.0	0.0	0.0	0	0	1.000
DMC 543	543	175	0	0	0	0.0	0.0	0.0	0	0	1.000
DMC 581	581	1419	0	0	0	0.0	0.0	0.0	0	0	1.000
DMC 612	612	130	0	0	0	0.0	0.0	0.0	0	0	1.000
DMC 632	632	294	0	0	0	0.0	0.0	0.0	0	0	1.000
DMC 640	640	267	0	0	0	0.0	0.0	0.0	0	0	1.000
DMC 645	645	54	0	0	0	0.0	0.0	0.0	0	0	1.000
DMC 646	646	269	0	0	0	0.0	0.0	0.0	0	0	1.000
DMC 647	647	600	0	0	0	0.0	0.0	0.0	0	0	1.000
DMC 648	648	424	0	0	0	0.0	0.0	0.0	0	0	1.000
DMC 680	680	290	0	0	0	0.0	0.0	0.0	0	0	1.000
DMC 712	712	414	0	0	0	0.0	0.0	0.0	0	0	1.000
DMC 730	730	2577	0	0	0	0.0	0.0	0.0	0	0	2.000
DMC 732	732	3199	0	0	0	0.0	0.0	0.0	0	0	2.000
DMC 733	733	1361	0	0	0	0.0	0.0	0.0	0	0	1.000
DMC 743	743	36	0	0	0	0.0	0.0	0.0	0	0	1.000
DMC 747	747	642	0	0	0	0.0	0.0	0.0	0	0	1.000
DMC 762	762	248	0	0	0	0.0	0.0	0.0	0	0	1.000
DMC 775	775	1047	0	0	0	0.0	0.0	0.0	0	0	1.000
DMC 779	779	827	0	0	0	0.0	0.0	0.0	0	0	1.000
DMC 782	782	1083	0	0	0	0.0	0.0	0.0	0	0	1.000
DMC 794	794	309	0	0	0	0.0	0.0	0.0	0	0	1.000
DMC 801	801	735	0	0	0	0.0	0.0	0.0	0	0	1.000
DMC 809	809	407	0	0	0	0.0	0.0	0.0	0	0	1.000
DMC 822	822	190	0	0	0	0.0	0.0	0.0	0	0	1.000
DMC 823	823	558	0	0	0	0.0	0.0	0.0	0	0	1.000
DMC 827	827	1334	0	0	0	0.0	0.0	0.0	0	0	1.000
DMC 831	831	1055	0	0	0	0.0	0.0	0.0	0	0	1.000
DMC 832	832	1390	0	0	0	0.0	0.0	0.0	0	0	1.000
DMC 833	833	417	0	0	0	0.0	0.0	0.0	0	0	1.000
DMC 844	844	343	0	0	0	0.0	0.0	0.0	0	0	1.000
DMC 930	930	595	0	0	0	0.0	0.0	0.0	0	0	1.000

Type	Number	Full	Half	Quarter	Petite	Back(in)	Str(in)	Spec(in)	French	Bead	Skein	Est.
■ DMC	934	362	0	0	0	0.0	0.0	0.0	0	0	1.000	
■ DMC	936	741	0	0	0	0.0	0.0	0.0	0	0	1.000	
■ DMC	938	1650	0	0	0	0.0	0.0	0.0	0	0	1.000	
■ DMC	939	847	0	0	0	0.0	0.0	0.0	0	0	1.000	
■ DMC	975	274	0	0	0	0.0	0.0	0.0	0	0	1.000	
■ DMC	976	17	0	0	0	0.0	0.0	0.0	0	0	1.000	
■ DMC	3012	347	0	0	0	0.0	0.0	0.0	0	0	1.000	
■ DMC	3024	295	0	0	0	0.0	0.0	0.0	0	0	1.000	
■ DMC	3031	834	0	0	0	0.0	0.0	0.0	0	0	1.000	
■ DMC	3042	465	0	0	0	0.0	0.0	0.0	0	0	1.000	
■ DMC	3325	907	0	0	0	0.0	0.0	0.0	0	0	1.000	
■ DMC	3363	54	0	0	0	0.0	0.0	0.0	0	0	1.000	
■ DMC	3364	11	0	0	0	0.0	0.0	0.0	0	0	1.000	
■ DMC	3371	2154	0	0	0	0.0	0.0	0.0	0	0	2.000	
■ DMC	3747	401	0	0	0	0.0	0.0	0.0	0	0	1.000	
■ DMC	3750	242	0	0	0	0.0	0.0	0.0	0	0	1.000	
■ DMC	3752	318	0	0	0	0.0	0.0	0.0	0	0	1.000	
■ DMC	3756	3428	0	0	0	0.0	0.0	0.0	0	0	2.000	
■ DMC	3768	215	0	0	0	0.0	0.0	0.0	0	0	1.000	
■ DMC	3770	407	0	0	0	0.0	0.0	0.0	0	0	1.000	
■ DMC	3772	146	0	0	0	0.0	0.0	0.0	0	0	1.000	
■ DMC	3787	642	0	0	0	0.0	0.0	0.0	0	0	1.000	
■ DMC	3799	934	0	0	0	0.0	0.0	0.0	0	0	1.000	
■ DMC	3819	378	0	0	0	0.0	0.0	0.0	0	0	1.000	
■ DMC	3820	157	0	0	0	0.0	0.0	0.0	0	0	1.000	
■ DMC	3821	32	0	0	0	0.0	0.0	0.0	0	0	1.000	
■ DMC	3826	67	0	0	0	0.0	0.0	0.0	0	0	1.000	
■ DMC	3828	204	0	0	0	0.0	0.0	0.0	0	0	1.000	
■ DMC	3860	674	0	0	0	0.0	0.0	0.0	0	0	1.000	
■ DMC	3862	632	0	0	0	0.0	0.0	0.0	0	0	1.000	
■ DMC	3863	185	0	0	0	0.0	0.0	0.0	0	0	1.000	
■ DMC	3864	36	0	0	0	0.0	0.0	0.0	0	0	1.000	
■ DMC	3865	4124	0	0	0	0.0	0.0	0.0	0	0	3.000	